

## ■ Indices of agricultural prices - May 2012

### Producers prices of fresh vegetables and fruits increased noticeably in May 2012

*In May, producer prices of agricultural products rose compared to April (+0.1 %) ; year-over-year they went up by 1.3%.*

Price of cereals decreased in May (-1.2 %). The prospect of abundant harvests in the northern hemisphere made the price to go down. The investors also considered the global economical situation as a risk factor, by partly withdrawing from the futures market.

#### Producer price of cereals

Base year : 2005



Price of oleaginous decreased in May (-3.2 %). The decline of oil price made the biodiesel less competitive, a substituting fuel obtained from colza. The economical uncertainties weighed also on the price of colza, as for cereals.

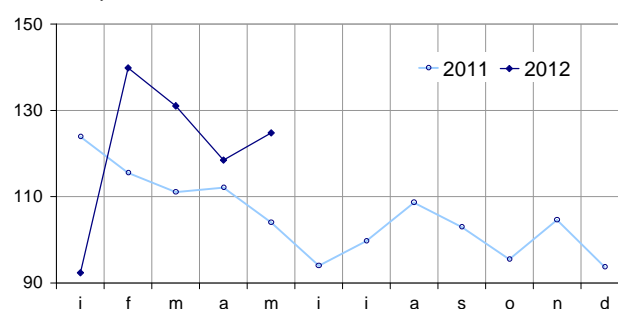
Potato price falls in May year-over-year (-31.2 %). More surface areas were devoted to the culture of potatoes in North-West Europe and the yields were higher than last year.

Wine price increases slightly in May (+0.8 %).

Price of fresh fruits increased in May year-over-year (+14.8 %). The rainy weather damaged cherries. The french strawberries sold easily due to a more moderate spanish competition than usually.

#### Producer price of fresh vegetables

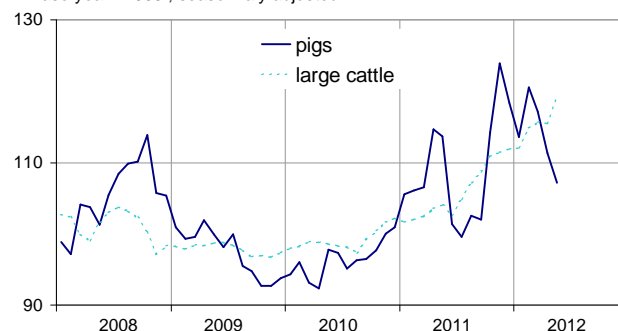
Base year : 2005



The price of fresh vegetable was higher in May that at the same period last year (+19.8 %). The low temperatures this spring diminished the supply of tomatoes and cucumbers. The rainy weather deteriorated a high quantity of salad plants. Lastly, endives farmers voluntarily restricted their productions to make the price go higher.

#### Producer prices of pigs and large cattle

Base year : 2005 ; seasonally adjusted



Price of animals went up in May (+0.5 %) on a seasonally adjusted basis. Prices of big cattle and poultry were dragged upwards by a dynamic demand. The price of pigs decreased : the for days labor weeks decreased the activity of slaughterhouses. Eggs kept on to be cheaper, the supply reinflating progressively. It stayed however on a sharp rise year-over-year (+145.0%), as

a result of a previous sharp cut in the production : a European directive had ordered compliance to a new standard for hen coops, reducing the number of animals.

### Indices of producer prices of agricultural products (IPPAP)

100 = 2005

	weights	May 2012 raw	Variation as % over : a month   weights   seasonally   adjusted data   April 2012 raw		
<b>Agricultural goods output</b> excluding fruits and vegetables	<b>1000</b> 878	<b>131.0</b> 132.3	<b>+0.1</b> -0.3	<b>-0.8</b> -0.6	<b>+1.3</b> -0.2
<b>Crop output (excluding fruits and vegetables)</b>	<b>417</b>	<b>146.1</b>	<b>-0.3</b>	<b>+0.1</b>	<b>-5.2</b>
Cereals	115	198.3	-1.2	-0.5	-9.9
of which soft wheat	63	207.0	-0.2	+0.4	-12.3
grain maize	27	179.6	-3.3	-1.3	-11.2
Potatoes	19	123.1	///	///	-31.2
Wines	161	122.3	+0.8	+0.6	+0.9
quality wines	140	121.1	+0.9	+1.0	+1.1
other wines	21	130.0	+0.2	-1.4	-0.8
Oleaginous	28	219.2	-3.2	+5.2	+3.7
Horticultural products	51	105.7	-6.5	-9.2	-2.0
Other crop products	43	105.8	+1.0	+2.4	+0.3
<b>Fruits and vegetables (1)</b>	<b>122</b>	<b>122.0</b>	<b>///</b>	<b>///</b>	<b>+15.0</b>
Fresh vegetables	61	124.7	///	///	+19.8
Fresh fruits	39	124.1	///	///	+14.8
<b>Animal output</b>	<b>461</b>	<b>119.7</b>	<b>-0.3</b>	<b>-1.4</b>	<b>+5.8</b>
Animals	286	119.6	+0.5	-1.2	+3.3
of which large cattle	108	120.1	+3.3	+3.9	+15.4
calves	29	118.7	-0.6	-2.0	+2.8
pigs	64	109.0	-3.8	-11.1	-5.8
sheep	14	116.3	+0.9	-4.3	-1.9
poultry	59	135.4	+1.0	+2.0	-2.9
of which chicken	26	134.5	+0.9	+2.2	-2.4
Milk	159	106.6	0.0	-4.2	-1.6
of which cow milk (2)	148	107.0	0.0	-4.5	-1.7
Eggs	13	284.4	-8.0	+12.3	+145.0

(1) Including vegetables for industry.

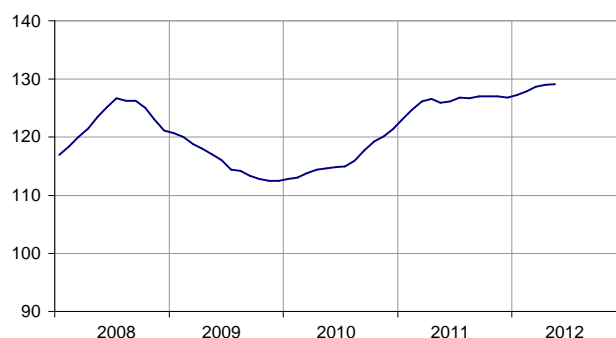
(2) The price for May is not yet known and therefore is estimated by carrying forward the seasonally adjusted price of April.

Sources: INSEE - SSP (department of Agriculture)

### Purchase price of the means of agricultural production is almost stable in May.

The price of intermediate consumptions did not increase much, the drop of energy price being offset by the rise of the price of animals. The price of investment did not evolve much as well.

### Purchase price of the means of agricultural production



### Indices of purchase prices of the means of agricultural production (IPAMPA)

100=2005

	weights	May 2012	Variation as % over : 3 months   a year		
<b>Total input</b>	<b>1000</b>	<b>129.1</b>	<b>+0.1</b>	<b>+0.9</b>	<b>+2.5</b>
<b>Goods and services currently consumed in agriculture</b>	<b>758</b>	<b>132.1</b>	<b>+0.1</b>	<b>+1.1</b>	<b>+2.9</b>
Energy (1)	84	152.6	-2.2	-3.2	+10.0
Seeds	51	116.9	0.0	+0.5	+4.3
Fertilisers and soil improvers	92	165.6	-0.7	0.0	+5.1
Plant protection products	77	106.6	+0.4	+1.7	+0.6
Animal feeding stuffs	189	142.4	+1.8	+4.7	+0.1
Veterinary expenses	38	117.7	+0.1	+1.0	+3.0
Small equipment and tools	14	110.8	+0.2	+1.1	+1.3
Maintenance of materials	56	128.7	+0.5	+0.7	+2.6
Maintenance of buildings	9	123.6	0.0	0.0	+2.1
Other goods and services	149	112.6	-0.3	+0.1	+1.2
<b>Goods and services contributing to investment</b>	<b>242</b>	<b>119.8</b>	<b>+0.1</b>	<b>+0.3</b>	<b>+1.2</b>
Material	170	116.8	+0.2	+0.4	+1.1
Tractors	71	113.5	0.0	+0.4	+1.1
Machinery and plant for cultivation	36	119.2	+0.3	0.0	-0.8
Machinery and plant for harvesting	37	117.6	+0.3	+1.0	+1.9
Utility vehicles	16	113.7	0.0	+0.1	+1.9
Buildings	72	127.1	0.0	0.0	+1.4

(1) The repayment of 5 cents per litre of fuel of the domestic tax on energetical products (TICPE) benefiting farmers has been applied in advance for the year 2012

Sources: INSEE - SSP (department of Agriculture)

### To know more about french indices of agricultural prices :

**The index of producer prices for agricultural products (IPPAP)** measures the evolution of products price when they are put on the market for the first time. They are set to 100 in 2005. the coefficients for their weights come from national accounts and are based on the year 2005. The weight-coefficients of fresh fruits and vegetables, early potatoes and cut flowers change every month. That is to reflect their very seasonal pattern. As a result their variations must be interpreted year-over-year. Seasonally adjustments address to cattle, milk, cut flowers as a whole, and to some other aggregates.

The methodology can be found via the link hereafter :

<http://www.insee.fr/fr/publications-et-services/sommaire.asp?codesage=IMET121&nivgeo=0>, and for fresh vegetables and fruits.

in Agreste - Chiffres et Données - n°165 - février 2005.

**The index of purchase prices of the means of agricultural production (IPAMPA)** reflects the variations of goods and services used in the agricultural process. They are based on the survey conducted by SSP (ministry of agriculture) at wholesale dealers of fertilisers, feed for animals, phytosanitary products, seeds, veterinary products and services and small equipment ; IPAMPA are also based on output prices industry and services (IPPI) for energy and equipment goods ; on consumption prices (IPC) for fuel ; and on construction indice for buildings and their maintenance. They are based on the year 2005.

**Further datas (historical datas. simplified methodology) are located on the HTML page of this publishing :**

<http://www.insee.fr/fr/themes/info-rapide.asp?id=80>

- Find directly historical data in the database « Base de Données Macro-économiques » : [G1123](#), [G1124](#)

- Press contact : [bureau-de-presse@insee.fr](mailto:bureau-de-presse@insee.fr)

Next publishing : July 31st at 12am